

NetClient™

Presented by:

Jones, Madden & Council, PLC

*A private and secure online service
that makes our **services** more convenient for you.*



- You're busy. Between running your business and running your personal life, it may not always be convenient to contact us. That's why we offer NetClient.





With *NetClient* you can get accounting and financial information and services via our website—any time, from anywhere.

Welcome to NetClient, William Martin -> [My Account](#) | [Sign Out](#)

Welcome

In order to view PDF files you **must** have Adobe Acrobat Reader installed.
To refresh the directory view [click here](#).

Document Presentation

- Mainstreet Enterprises
 - Accounting
 - Correspondence
 - General
 - Tax: Return

Remote Check Printing

Checks for Mainstreet Enterprises

Payroll Checks: 1

Payroll checks for 08-08-03

Vendor Checks: 0

CBS

Client Bookkeeping Solution for Mainstreet Enterprises

Account Aggregation

Portfolio	Last Retrieved	Current Value
Bills Trust	August 4, 2003	\$12,576.32
Retirement	August 4, 2003	\$73,245.54
Total Value		\$85,821.96

[View Detail](#) [Edit Accounts](#)

File Exchange Explorer

Path: /
Total Size: 0 B

- Mainstreet Enterprises
- Documents
- Financial Statements

Remote Payroll Data Entry

Open Payroll for: Status Last Modified
Mainstreet Enterprises Your accountant has retrieved your Payroll. 11:22 AM CDT on 8.15.03

Stock Quotes

SPX 987.66 -15.16 COMP 1672.40 41. Choose Symbols >>

Symbol	Price	Change	Volume
.INDU	9065.40	-120.70	0
GE	27.95	-0.53	12,100,900
TOC	29.95	+0.20	52,100

Web Organizer Data Entry

Open Web Organizer for: Status Last Modified
William Martin There is a new web organizer for you. 7:00 PM CDT on 7.30.03

Copyright © Parnes, Velano, Martinez & Co., CPA. All rights reserved.
2003.5.0-D



NetClient lets you access our services directly from our web site—using a secure, private portal that's especially for you.

If you've ever checked your personal investment or banking information online, then you've accessed a portal.



(A portal is just a doorway to more information. Think of NetClient as a private online office that only you and we can enter.)



NetClient is Like a Virtual Visit to Our Office

- **Convenient**—Access your information 24 hours a day, 7 days a week, from your home, your bank, your office...anywhere!
- **Secure**—Enter your own password-protected portal where only you (and we, of course) have access to your files.
- **Fast**—Within moments you can access files and software, enter data, and more!



How Do You Use *NetClient*?

It's easy:

1. Visit our website
2. Click on the “client sign-in” link
3. Log in using your personalized ID and password
4. Use any or all of the available online services



Online Services

Here are some of the convenient, easy-to-use, online services that can be available with your *NetClient* portal:

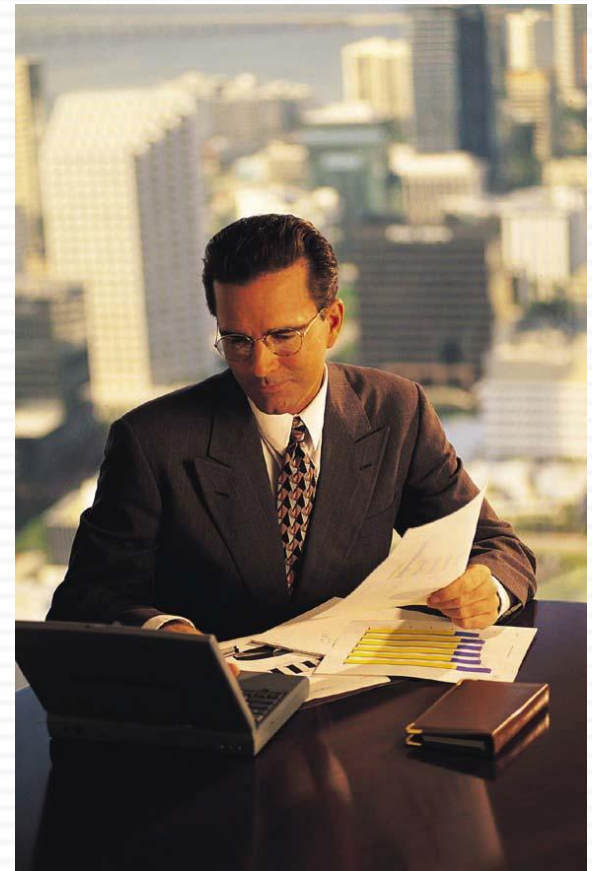
- Document Presentation
- File Exchange
- Client Bookkeeping Solution/ASP
- Remote Payroll Data Entry
- Remote Payroll Check Printing
- Account Aggregation
- 1040 Tax Organizer
- Stock Quotes



Document Presentation

Document Presentation gives you access to all of your financial documents, such as your tax return, financial statements, or invoices—any time of the day or night.

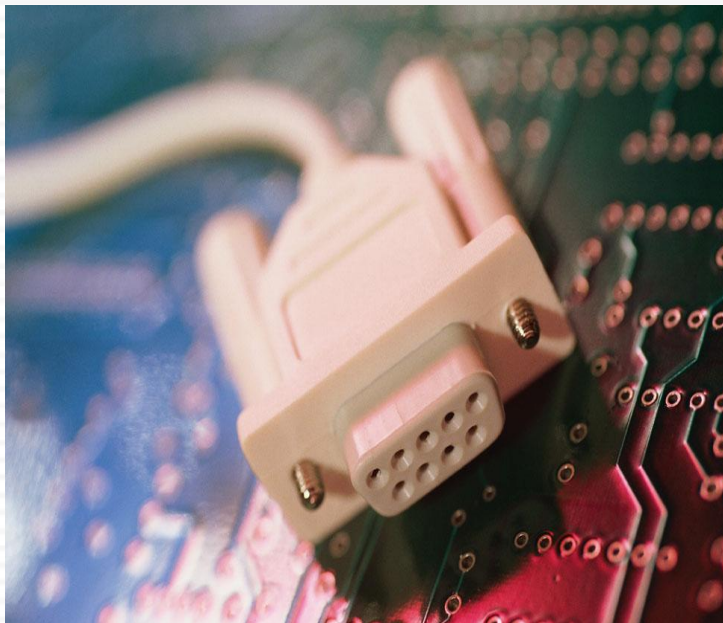
So any time you need a copy of a financial document for an early meeting, just log on to our website and print out an electronic copy in moments.





File Exchange

File Exchange lets you exchange information and share working files with us—immediately and securely. This helps ensure that working documents,



such as budgets or forecasts, are updated and questions are answered quickly and conveniently.



Client Bookkeeping Solution (CBS) ASP

CBS ASP is the online version of *Client Bookkeeping Solution* software. We set up the software for you—and you can use it to write and record checks and do your day-to-day bookkeeping just as if the software were running on your computer.

continued...

The screenshot displays the 'Society Bancorp - PayChecks' window. It includes a menu bar (File, Edit, Checkbook, Task, Utilities, Window, Help), a toolbar, and a sidebar with navigation options like CBS, CheckWriter, PayCheck, PayChecks, Check Printing, Reports, Employees, Departments, Employee Templates, PayCheck Items, and Benefit Accruals. The main window shows a 'Handwritten' check for 12/31/03, issued to 'Smith, Joe T.' for \$577.92. Below this is a detailed table of earnings and deductions, and a list of individual paychecks.

Desc	Reg Hrs	OT Hrs	DT Hrs	Rate	Amnt	Desc	Amnt
Sales-CA						Units	1
California Wage	40.0000	0.0000	0.0000	12.0000	480.00	misc	
CA Sick Time P	0.0000				0.00	FICA-SS	29.76
CA Vacation P	0.0000				12.0000	FICA-Med	6.96
EC Adv-Single	0.0000	0.0000	0.0000	0.0000	97.92	Federal WH	25.92
Totals	40.0000	0.0000	0.0000		577.92	CA State WH	2.30
FICA SS Expen						CA 401K	0.00
FICA Med Expe						SDI	4.32
FUTA Expense							69.26
					Gross Pay: \$577.92		Net Pay: \$598.66

Date	Check #	Employee ID	Employee Name	Net Pay
09/15/03	1217	4	Julie P. Miller	3,803.51
09/15/03	1218	5	Perry W. Navare	792.89
09/15/03	1219	2	May L. Perry	337.11
10/10/03	1236	4	Julie P. Miller	3,701.58
10/10/03	1237	1	Joe T. Smith	576.82
10/10/03	1238	5	Perry W. Navare	763.12
11/20/03	1271	1	Joe T. Smith	1,624.85
11/20/03	1272	4	Julie P. Miller	3,701.57
11/20/03	1273	5	Perry W. Navare	645.85
12/03/03	1275	1	Joe T. Smith	1,150.47
12/03/03	1276	4	Julie P. Miller	3,701.58
12/03/03	1277	5	Perry W. Navare	780.59
	Unprinted	1	Joe T. Smith	1,230.39
	Unprinted	4	Julie P. Miller	3,701.58
			(New paycheck)	



CBS ASP, cont.

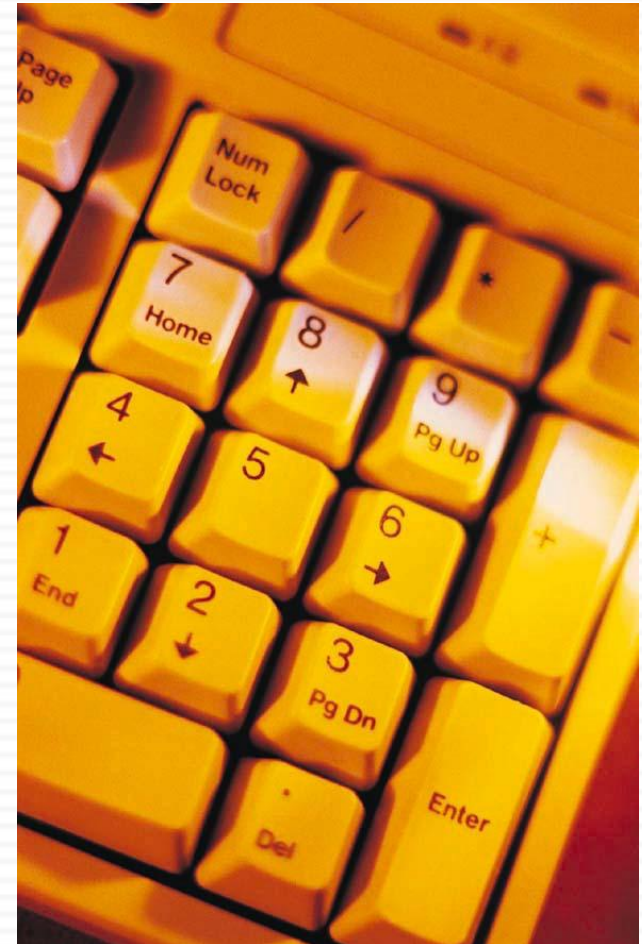


You're always using the most up-to-date version of the software. No need for manual installations and updates, and as soon as you post your transaction data, it's available to us for processing.



Remote Payroll Data Entry

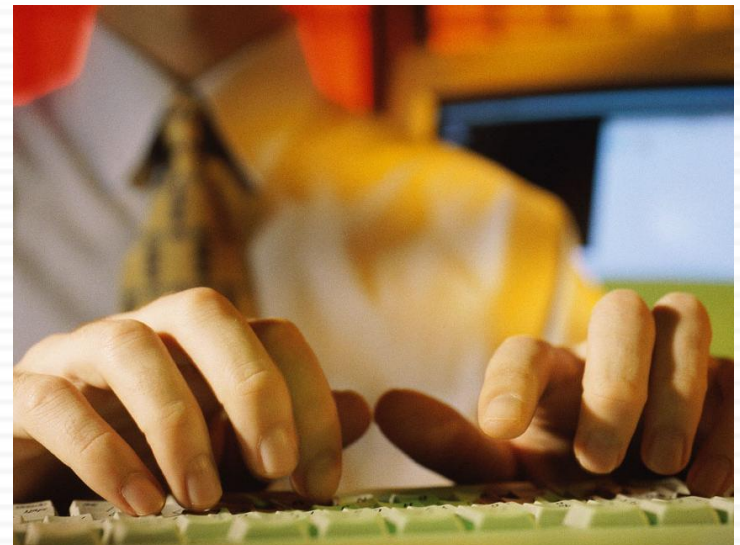
Remote Payroll Data Entry lets you quickly and accurately submit payroll data to our office. You can enter payroll data from your business or your home—wherever and whenever it's convenient.





Remote Payroll Check Printing

After we calculate your payroll amounts, we can even make your payroll checks available electronically, and you can print them in your office. Remote Payroll Check Printing is fast, accurate, and secure.

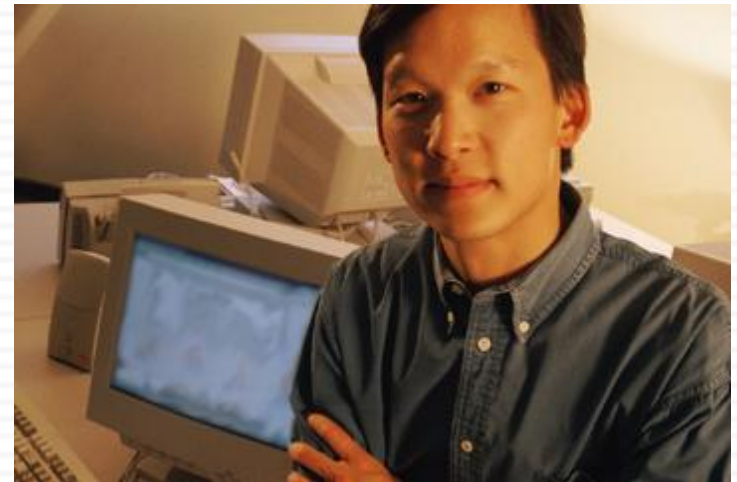




Account Aggregation

Account Aggregation makes it easy to view and analyze your total financial holdings.

With Account Aggregation, you can pull your account information from over 1,500 financial institutions into your private portal—offering a complete comprehensive picture of your personal finances. You can view any or all of your records—any time you want. Think of this as your online portfolio.





1040 Tax Organizer

At tax time, we'll use the online 1040 Tax Organizer to collect the information we'll need to prepare your taxes. You enter the data online; then we can use this data to prepare your tax return.





Stock Quotes

Stock Quotes are an added convenience. The information is constantly updated, so you can also monitor the stock market while you're in your portal.



NetClient™

Jones, Madden & Council, PLC.



Save!



Save time—and get information you want when you want it. It's private. It's secure. It's convenient.

It's *NetClient*. And it's available from Jones, Madden & Council, PLC. Just give us a call at 757-461-1040.



NetClient—

The convenient, secure way to help yourself to our services...

***24 hours a day,
7 days a week!***

